



Ph D admission (I SEM2017-18)

1. Area(s) of Ph D admission in the I Semester2017-18: Parasitology, Environmental & Microbial Biotechnology, Plant Biotechnology, Cancer Biology, Bioinformatics

2. Scholarship/assistantship available:

- (a) Institute Assistantship Up to Rs 25000 per month
- (b) Students having own fellowship will be preferred.

3. Department plans to admit student under: Institute fellowship or Govt. Funded fellowship to students

a. **Full Time students:** student who will devote full-time on Ph D work.

b. **Part-time Students:** Candidates working in organizations having MoU with BITS. Students having M.Tech, M.Phil in biological science related programs will be preferred. Students having M.Sc. will have to complete required course work similar to full-time students as specified by DRC. They will not be entitled for any assistantship from the Institute.

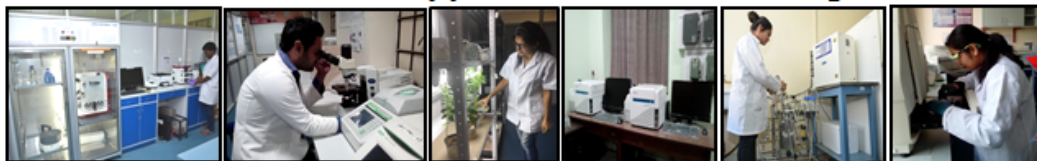
4. Fee structure: (For the academic year 2016-17*):

	Full-Time	Part-Time
Ph D application fees (one time)	2200	2200
Admission fees (one Time)	28050	28050
Tuition fees per semester *	11330	22660
Institute caution deposit	3000	3000
Hostel Fee, Mess & electricity advance Hostel, ICT, Infra Structure Modernization Fees student aid fund	Applicable as per campus rules	---

** The above prescribed semester fees is for student admitted in the academic year 2016-17. For these students, the semester, term, and admission fees will be revised upward every year, but will not increase beyond 15% each year (unless the government announces any new lavy/tax, which will be passed on to all existing students irrespective of their year of entry.*

Applications for Ph.D. Programme

Ph.D. Admissions
for 1st Semester 2017-18
are open. Last date for
submitting online applications is
May 16, 2017



The Department of Biological Sciences, BITS Pilani, Pilani Campus, is looking for bright and dedicated young scholars interested in research. The department is pursuing R & D projects sponsored by various government funding agencies and industries. In last 10 years, the department has produced over 100 PhDs (both On-Campus & Off-Campus) in different areas of Biological Sciences. The graduating PhD students have found positions in both industries and academia in India and abroad. Positions are open in different research areas in the department.

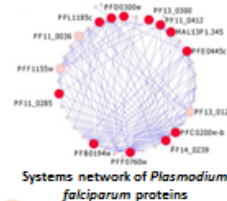
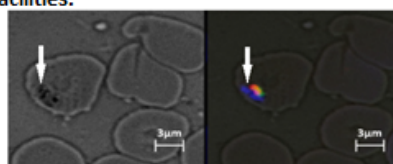
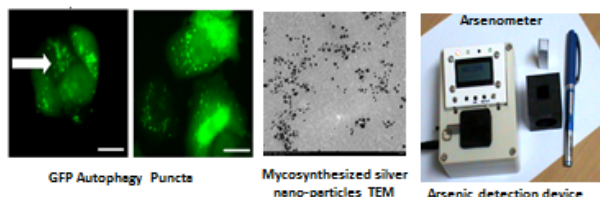
Major research areas of the department include-

- **Environmental and Microbial Biotechnology** –
 - Nano-biotechnology, Biosensor development, Host–Microbe interactions, Plant–microbe interactions, Microbial Ecology
- **Molecular Parasitology** –
 - Systems Biology of Malaria parasite, Host–Parasite Interactions, Identification of novel drug targets, Parasite genetic diversity, Drug Resistance, *Plasmodium* apicoplast & metabolic pathways studies
- **Cancer Biology** –
 - Autophagy, Drug Resistance, Stem Cell studies
- **Biochemistry and Enzyme Biotechnology** –
 - Phytochemical studies, Enzyme Biology
- **Plant Biotechnology** –
 - Studies on Carbon fixation and Calvin cycle, Analysis of genetic elements and promoters,
- **Bioinformatics and Bio-molecular Modeling** –
 - Molecular docking, drug interaction studies

Applicants are encouraged to visit our department webpage (<http://www.bits-pilani.ac.in/pilani/biologicalScience/Faculty>) for information on research interests of our faculty members.

Major Facilities

- ✓ Department is well equipped with high-end instrument facilities such as: FPLC, Gene Gun, Fluorescence microscopes, Ultra centrifuge, etc. and various basic instruments required for molecular biology and Nano-biotechnology work.
- ✓ Central Analytical Lab houses many sophisticated instruments, used for research as well as training purpose. These include HPLC, Flow Cytometry, GC-MS, SERS-AFM, LC-MS, etc.
- ✓ Central Animal Facility: It is a CPCSEA approved facility which maintains animals like rats, mice, and rabbits. This facility is well equipped and has proper Operation Theater.
- ✓ Information Processing Center: It houses 200 – node cluster server, super computer, various latest technology based servers and computing facilities.



Application Procedure

- ❖ Applications process initiates in April and October last weeks.
- ❖ The applicants will have to appear for an Entrance Examination followed by an interview.
- ❖ Entrance exams are conducted every year during July end and January start.
- ❖ Candidates with their own fellowships (like CSIR-NET JRF/ UGC-JRF/ DST-Inspire fellowships/ ICMR JRF, etc.) are exempted from entrance examination and can appear directly for interview throughout the year.
- ❖ Interested candidates should apply using prescribed application forms available at <http://www.bitsadmission.com/phmain.aspx>.
- ❖ Detail of fee structure and payment mode are also available at the same website.

Eligibility

- The applicant should possess Master's degree (M.Sc./ M. Tech. or M.E./ M. Phil in any Biological Science discipline or M. Pharma/ B. E. or B. Tech. Biotechnology with a minimum of 60% aggregate. NOTE: Candidates with CSIR-NET JRF/ UGC-JRF/ DST-Inspire fellowships will be given preference.

Financial Support: Candidates joining the PhD programme, will be considered for Institute Fellowship of Rs. 25000/- as per the Institute rules.

Contact:

Head, Department of Biological Sciences, New Science Block,
Birla Institute of Technology and Science (BITS), Pilani, Pilani Campus, Pilani – 333031, Raj.
Ph: 01596-515250, 515273; Email: hod.biology@pilani.bits-pilani.ac.in

For more details: <http://www.bits-pilani.ac.in/pilani/biologicalScience/DepartmentofBiologicalScience>

